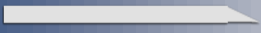
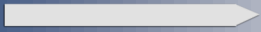


Blades and Cutting Wires



SB SE (Single Bevel, Single Edge)



DB SE (Double Bevel, Single Edge)

Twisted



DB DE (Double Bevel, Double Edge)



Type A



Horizontal Band Knives

Sizes:
25—85 x 0,45—1,0 mm

Type B



Vertical Band Knives

Sizes:
8—25 mm x 0,45—0,60 mm

Type C



Toothed Form S Band Knives

Sizes:
20—40 mm x 0,45—0,50 mm

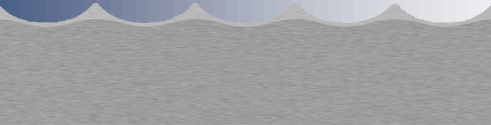
Type D



Convex Band Knives

Sizes:
15—30 mm x 0,45 mm

Type E



Concave Band Knives

Sizes:
15—30 mm x 0,45 mm

Blades and Cutting Wires



SB SE (Single Bevel, Single Edge)



DB SE (Double Bevel, Single Edge)

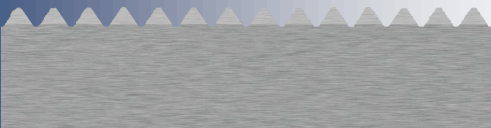
Twisted



DB DE (Double Bevel, Double Edge)



Type F

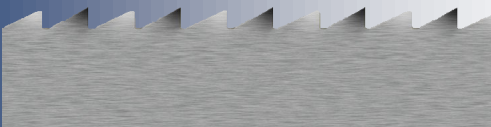


Toothed Form F Band Knives

Sizes:

6—20 mm x 0,45—0,60 mm

Type G



Saw Blades

Sizes:

6—25 mm x 0,45—0,70 mm

(Wide range of different types of teeth)

Type H



Contour Cutting Blades

Sizes:

3,0—4,5 mm x 0,45—0,80 mm

(also available with teeth's)

Type I



Oscillating Blades

Sizes:

3,0 mm x 0,45—0,60 mm (24 TPI)

Type J

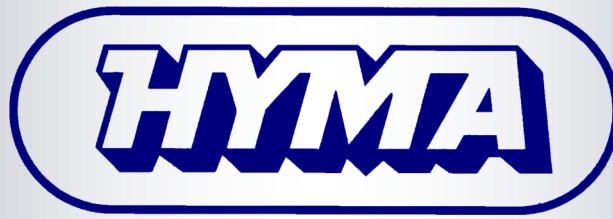


Cutting Wires

Types:

HS (Smooth)

HSS (Rough)



Grinding Stones



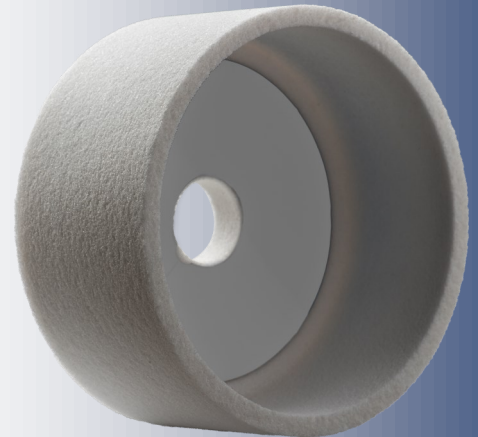
Conical cup stone

For vertical and various machines

Available in grain:

100: Part number: 15-000614

220: Part number: 15-000615



Cup stone

For horizontal slitting machines

Available in Diameter:

100 mm: Part number: 15-000616

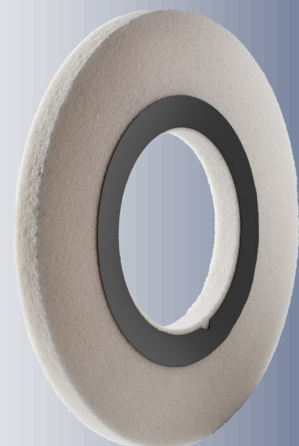
125 mm: Part number: 15-000617



Flat grinding stone

For older vertical cutting machines

Part number: 15-000613



Flat grinding stone

For peeling cutting machines

Part number: 15-000618